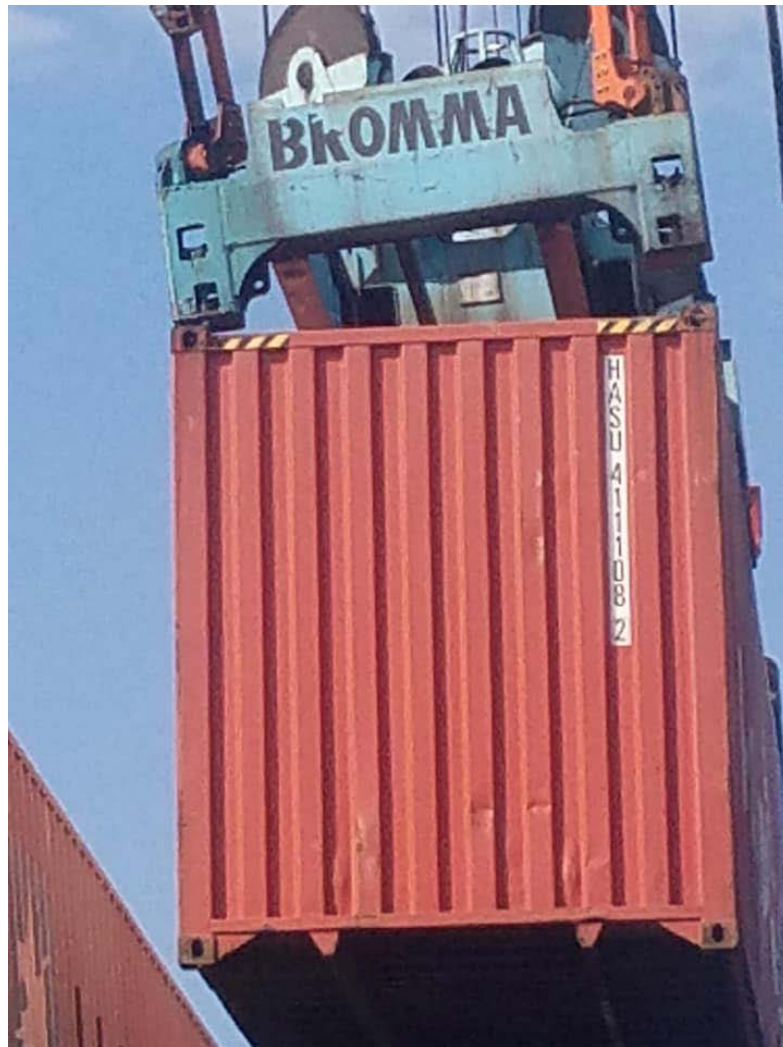




ILA-USMX JOINT SAFETY COMMITTEE

OSH Circular 2021-09 (02 September 2021)

Make Sure You Lock-In All Four



When engaging containers with any spreader device, check your equipment's console lights and get an indication about twist lock engagement. Then, just to be sure, take a test lift and float the load. When lifting containers, being locked into three corners isn't enough. Containers are designed to be top lifted vertically; from all four corners.

Attempting a top lift in any other manner is unsafe and dangerous.

Got an OSH-related question? Write to the JSC at: blueoceana@optonline.net

Working Together For The Benefit Of All

ILA-USMX OSH Circulars are devised to reflect the best possible information and guidance, and are products of diligent research and the most up to date subject matter knowledge. Consequently, while the information contained herein is believed to be accurate, owing to a host of factors ILA-USMX can convey no direct or implied warranty relative to the reliance of parties upon content.