

# Deaths on the Waterfront

By [RLn](#) - 02/03/2022

35 0



Random Lengths News has learned that two deaths occurred in the San Pedro Bay Ports, one in Long Beach on Jan. 15 and the other at the Port of Los Angeles on Jan. 18. After more than two weeks, investigations are still ongoing with little information released to the public.

What is known at press time is that on Jan. 15, Long Beach port police responded to a call to a deceased male at 3:34 p.m. It is reported that he was hit by a transtainer. [The transtainer is a machine developed for handling containers. The equipment can be designed to handle a wide range of shapes and dimensions, offering different configurations for stacking and lining up containers].



## Tough Oven Stain Removal Trick

Here's how to remove the toughest oven stains in seconds without any scrubbing.

[buydrcleanspray.com](http://buydrcleanspray.com)

[Open >](#)

Chulaih Ang, 64, an ILWU member died on Jan. 15 in an industrial accident causing blunt force traumatic injury at ITS Terminal in Long Beach. Long Beach Police and Long Beach Fire were the first responders. The county coroner was also on scene.

The decedent was sent to St. Mary's Hospital in Long Beach where he died.

The Port of Long Beach public information officer reported that the Long Beach Board of Harbor Commissioners adjourned its Jan. 24 regular meeting in Ang's honor.

According to the LA County Coroner's office on Jan. 18, a 911 call was made at 7:02 a.m. in response to another death that occurred at the 400 block of S. Palos Verdes Street in San Pedro. However, that reported address is inaccurate. The accident actually occurred at pier 400 on 2500 Navy Way on Terminal Island, East San Pedro. The Port of LA port police arrived at 8:09 a.m. to this incident and accompanied the victim to the hospital until the family arrived.

The Los Angeles County coroner reported that 37-year-old Edgar Ruiz (37) died in the hospital Jan. 18, from a blunt force trauma neck injury by a piece of equipment that fell from a crane. It is reported that Ruiz worked for a contractor, BHCcrane whose motto is, "committed to ensuring a safe and healthy work environment." The terminal is operated by APM Maersk Terminals Los Angeles and is the largest container port terminal in the Western Hemisphere, featuring over 507 acres of world-class infrastructure and was the focus of the conflict over automation.



## Tough Oven Stain Removal Trick

Here's how to remove the toughest oven stains in seconds without any scrubbing.

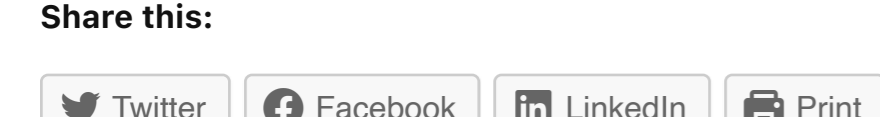
[buydrcleanspray.com](http://buydrcleanspray.com)

[Open >](#)

According to the GoFundMe page set up for his fiancée and unborn child, Ruiz was crushed by a 4,000 lb. piece of metal. The GoFundMe page has a \$100,000 goal. It's reached a little more than \$20,000 so far.

RLn has also contacted the Long Beach Fire Department in regard to these incidents but has not heard anything further.

### Share this:



### Like this:



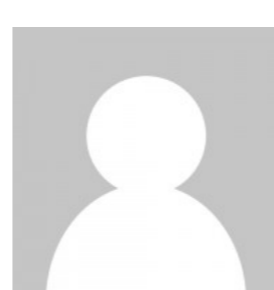
Be the first to like this.

**TAGS** Chulaih Ang deaths ITS Terminal Port of Los Angeles Waterfront



Previous article **LA Unified to SP Residents: Rat Problem is Not Our Problem**

Next article **Train Robbers and Other Bandits**



**RLn**

<https://www.randomlengthsnews.com>



## Tough Oven Stain Removal Trick

Here's how to remove the toughest oven stains in seconds without any scrubbing.

[buydrcleanspray.com](http://buydrcleanspray.com)

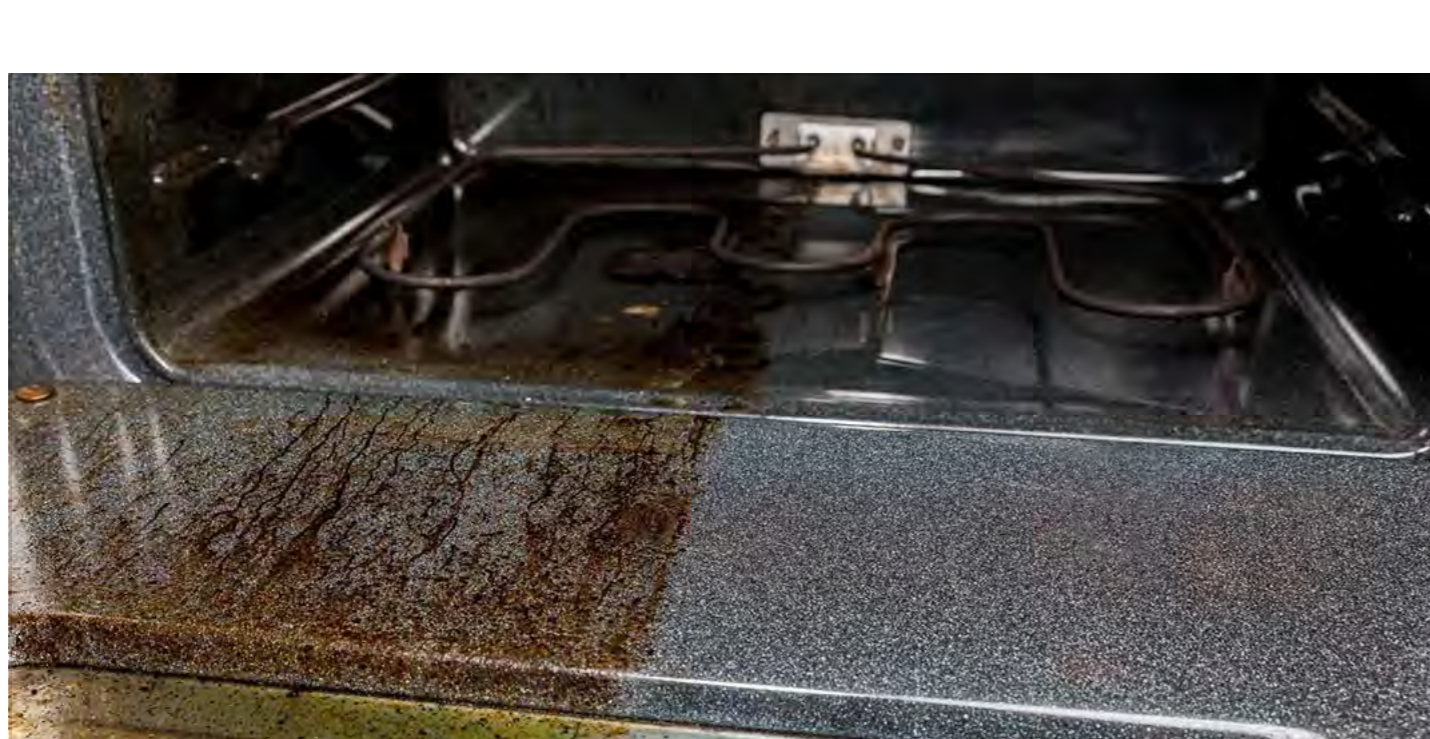
[Open >](#)

### RELATED ARTICLES

**Walker's Cafe May Live On**  
[Hunter Chase](#) - 02/03/2022

**Trump Confesses! This is an admission, and a massively un-American statement**  
[Paul Rosenberg](#) - 02/03/2022

**LA Unified to SP Residents: Rat Problem is Not Our Problem**  
[Hunter Chase](#) - 02/03/2022



## Tough Oven Stain Removal Trick

Here's how to remove the toughest oven stains in seconds without any scrubbing.

[buydrcleanspray.com](http://buydrcleanspray.com)

[Open >](#)

### NO COMMENTS

Tell us what you think about this story.

Enter your comment here...



ABOUT US

FOLLOW US

